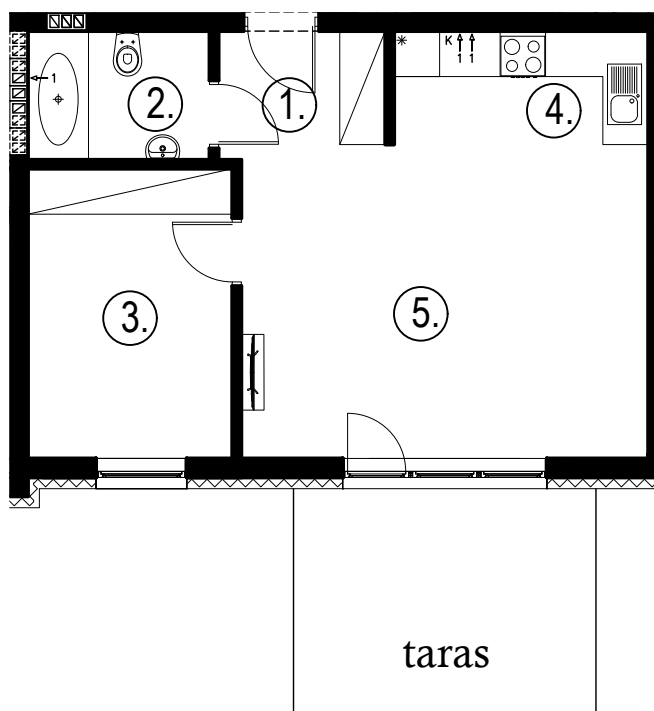
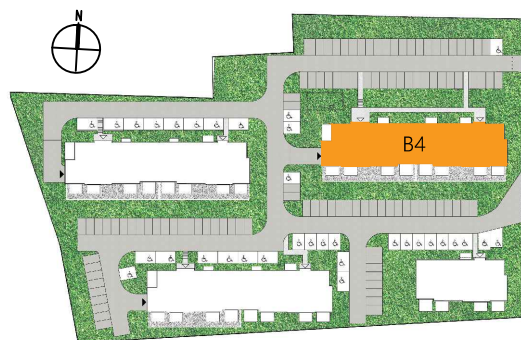
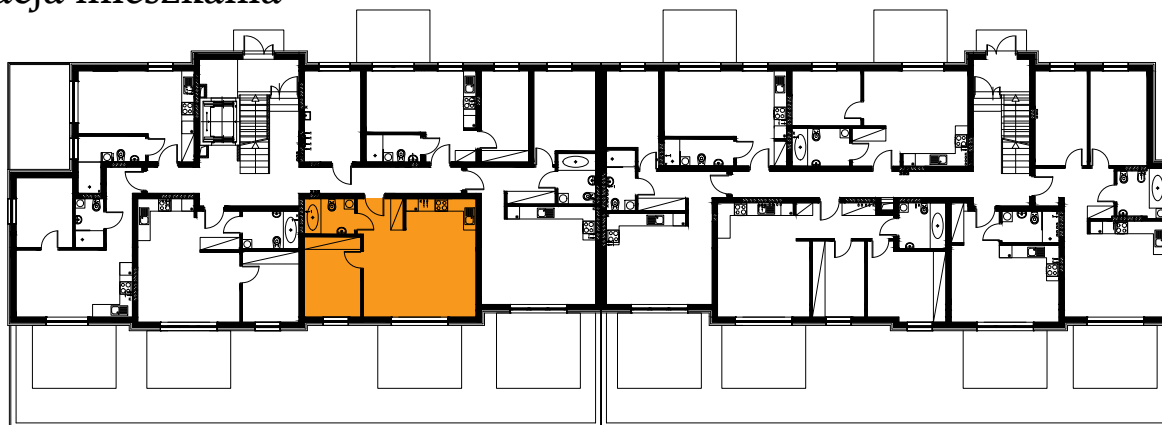
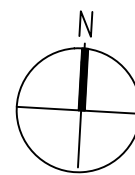


Błatnia Residence

Budynek B4, Mieszkanie 27

Rzut parteru

Lokalizacja mieszkania



| | |
|-------------------|----------------------|
| 1. przedpokój | 3,32 m ² |
| 2. łazienka | 4,00 m ² |
| 3. sypialnia | 10,20 m ² |
| 4. aneks kuchenny | 5,00 m ² |
| 5. salon | 22,13 m ² |
| taras | |

44,65 m²